

# MONTHLY MEMBERSHIP PROGRESS REPORT

District 4 C6

Results as of: 8/31/2024

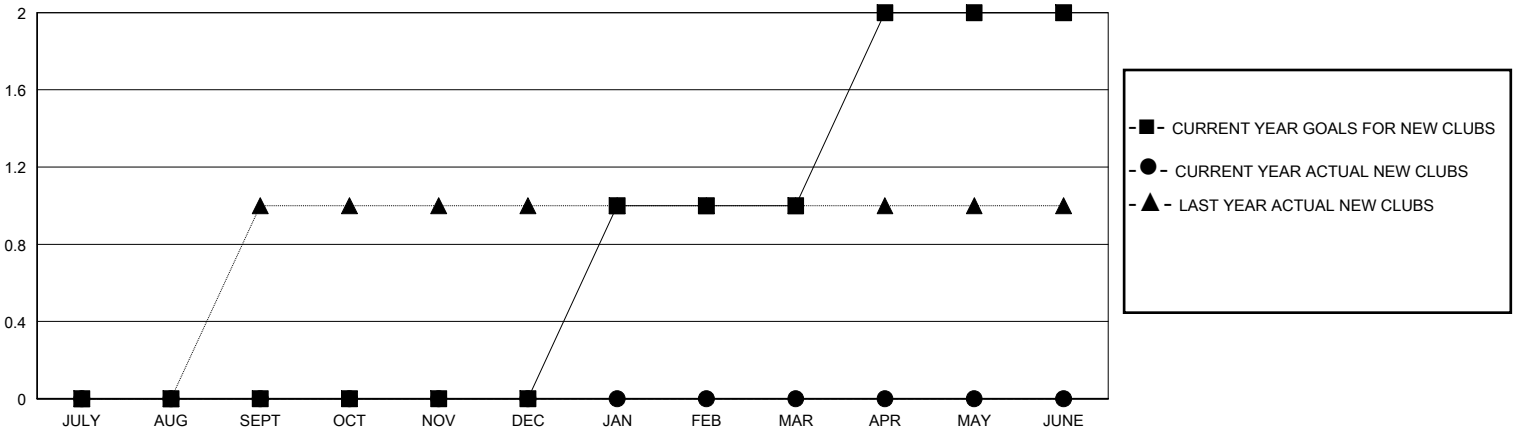
GMT:

LOCATION CALIFORNIA

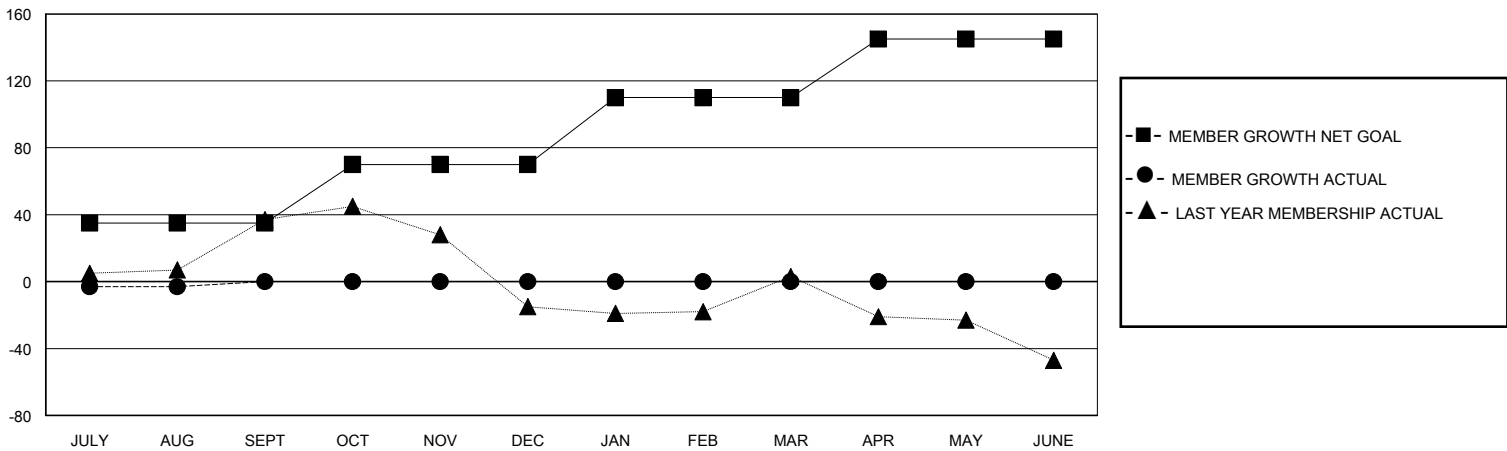
GMT CA

Clubs				Members			
RESULTS FOR 2024-2025				RESULTS FOR 2024-2025			
QUARTER	NEW CLUB GOAL	NEW CLUBS	DROPPED CLUBS	QUARTER	MEMBER GROWTH NET GOAL	MEMBER GROWTH ACTUAL	DROPPED MEMBERS ACTUAL (including transfers)
JULY/AUG/SEPT	0	0	0	JULY/AUG/SEPT	35	16	16
OCT/NOV/DEC	0	0	0	OCT/NOV/DEC	35	0	0
JAN/FEB/MAR	1	0	0	JAN/FEB/MAR	40	0	0
APR/MAY/JUNE	1	0	0	APR/MAY/JUNE	35	0	0

GOALS AND ACTUAL NEW CLUBS CUMULATIVE



GOALS AND ACTUAL MEMBERS CUMULATIVE



DROPPED CLUBS: 0	7 CLUBS OF 38 ADDED 1 OR MORE NEW MEMBERS	<b>GENDER DISTRIBUTION</b> MALE 505 (52.71%) FEMALE 452 (47.18%)
<b>DROPPED MEMBERS</b> DECEASED 2 CLUB CANCELLED 0 OTHER 14 TOTAL 16	<a href="#">CLICK HERE FOR CUMULATIVE MEMBERSHIP DATA</a>	TOTAL FAMILY UNIT MEMBERS 176 FAMILY MEMBERS PAYING HALF DUES 92